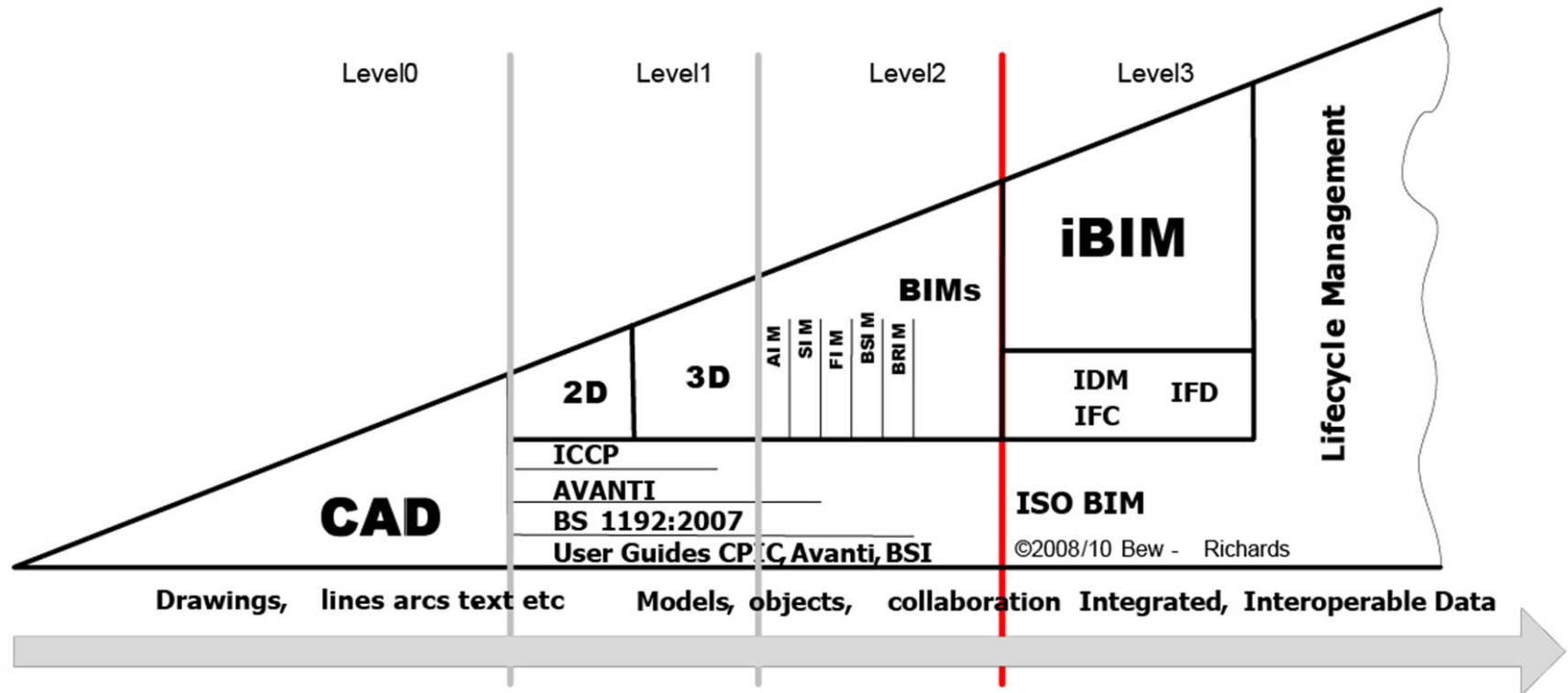


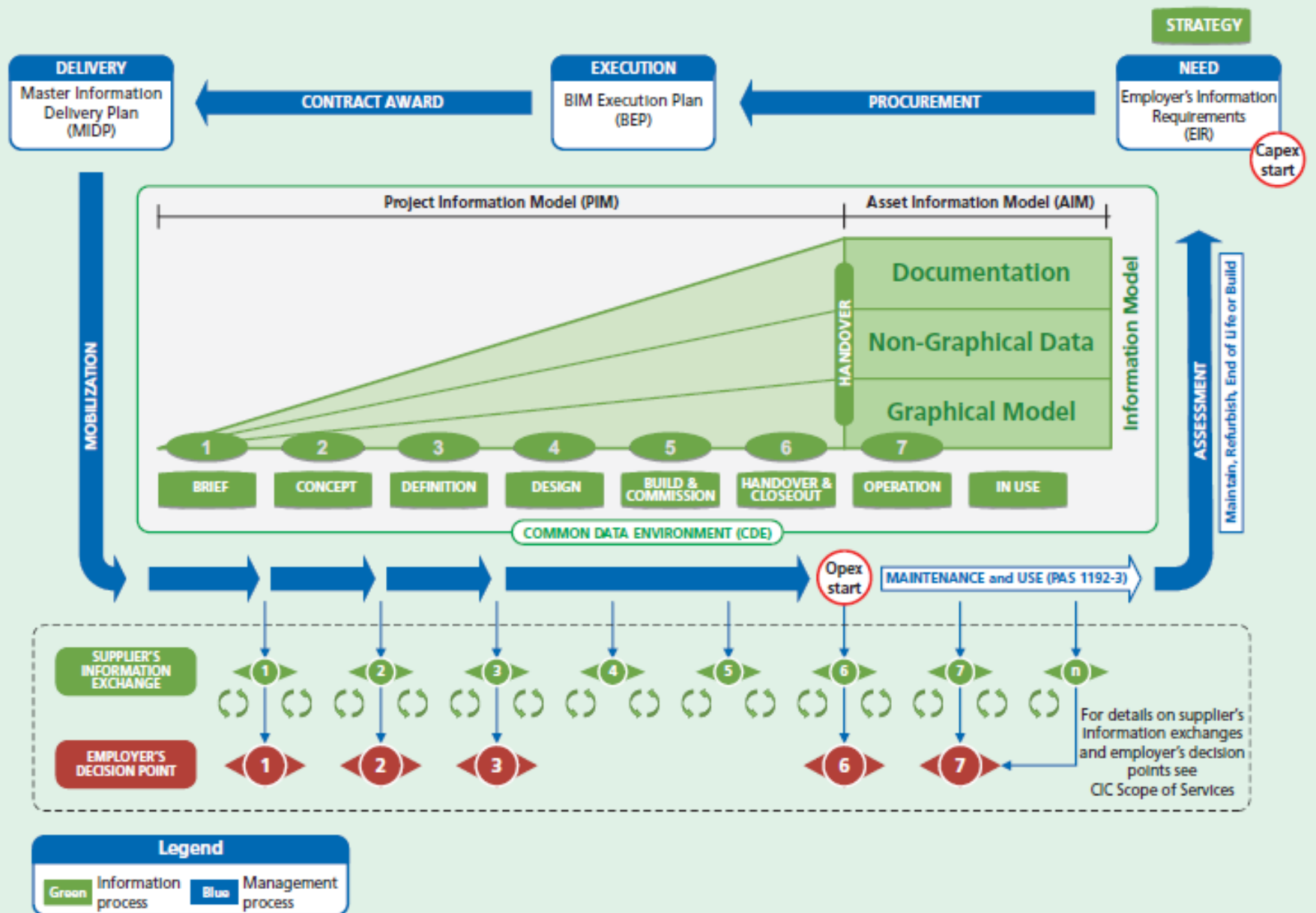
Soporte BIM al Análisis de Atrasos

Félix Soto Morales, MSc, PSP, EVP

En general, ¿hay un aporte del BIM en los reclamos de construcción?

Niveles de BIM





¿hay un aporte del BIM en los reclamos de construcción?

SI, DEBERÍA

CLAIMS, DISPUTES AND LITIGATION INVOLVING BIM



JASON M. DOUGHERTY

- Enfoque del reclamo en un proyecto sin BIM:
 - Derecho al reclamo, la causa - responsabilidad, el daño y su cálculo
 - ¿Y el enfoque en proyectos con BIM?
 - Derecho al reclamo, la causa - responsabilidad, el daño y su cálculo
-

DIMENSIONES

3D

- Existing Conditions Models
 - Scanning
 - Ground Penetration
- Safety & Logistics Models
- Animations, renderings, walkthroughs
- BIM driven prefabrication
- Laser accurate BIM driven field layout

4D

SCHEDULING

- Project Phasing Simulations
- Lean Scheduling
 - Last Planner
 - Just In Time (JIT)
 - Detailed Simulation Installation
- Visual Validation for Payment Approval

5D

ESTIMATING

- Real time conceptual modelling and cost planning
- Quantity extraction to support detailed cost estimates
- Trade Verifications
 - Structural Steel
 - Mechanical Plumbing
 - Electrical
- Value Engineering
 - Visualisations
 - Quantity Extractions
- Prefabrication Solutions
 - Equipment Rooms
 - MEP Systems
 - Unique architectural and structural elements

6D

SUSTAINABILITY

- Conceptual energy analysis via D Profiler
- Detailed energy analysis via Eco Tech
- Sustainable element tracking
- LEED tracking

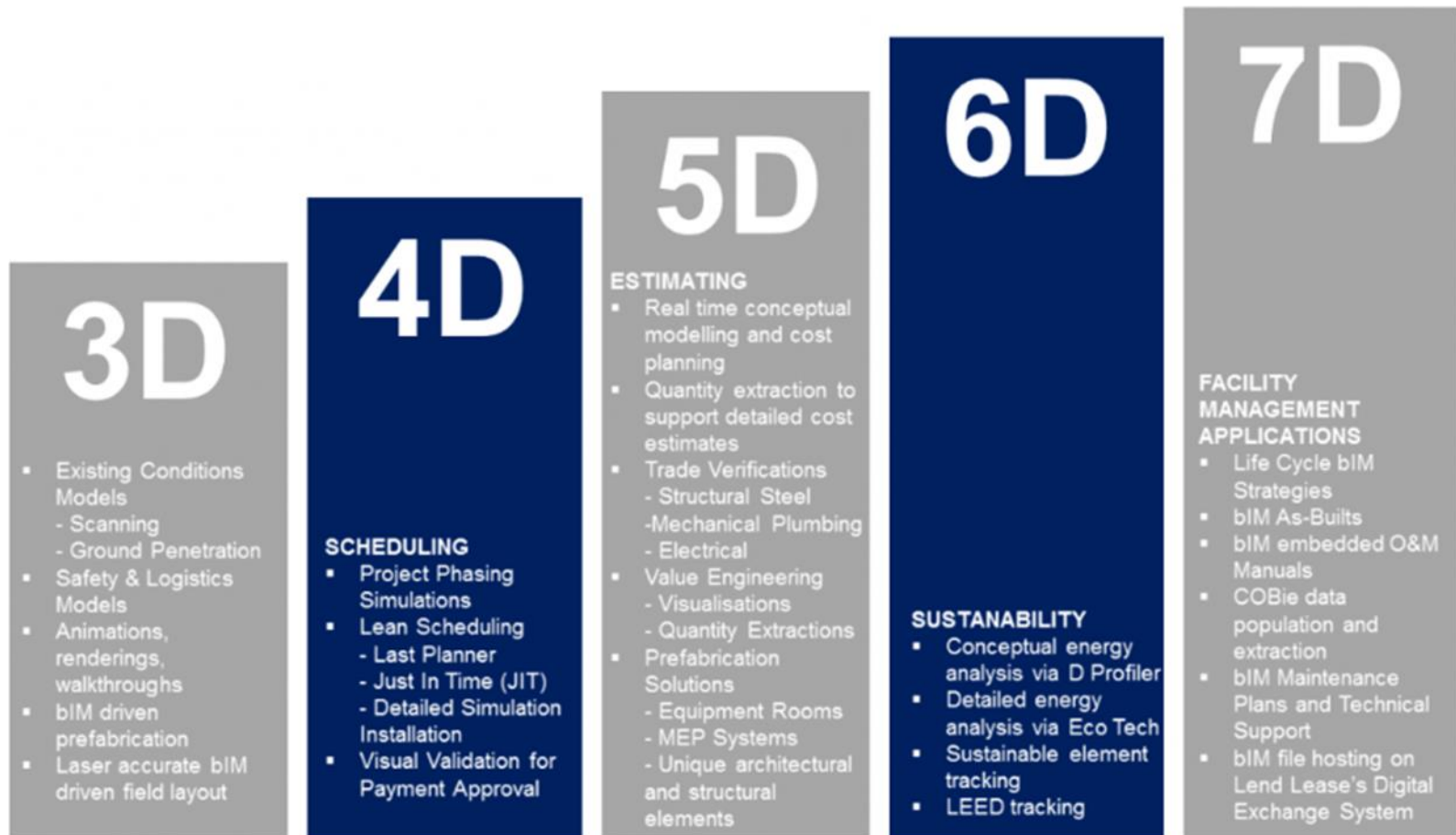
7D

FACILITY MANAGEMENT APPLICATIONS

- Life Cycle BIM Strategies
- BIM As-Built
- BIM embedded O&M Manuals
- COBie data population and extraction
- BIM Maintenance Plans and Technical Support
- BIM file hosting on Lend Lease's Digital Exchange System

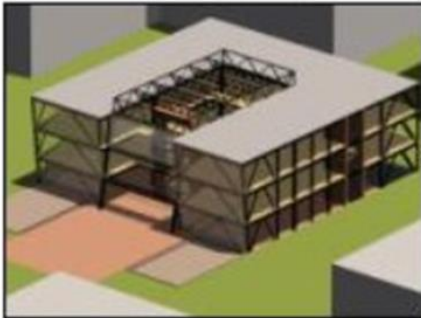
Cómo puede aportar el BIM en el análisis de atrasos?

4D

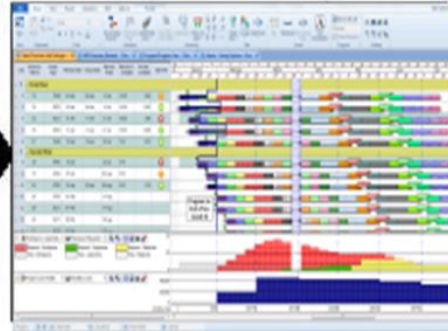


4D scheduling

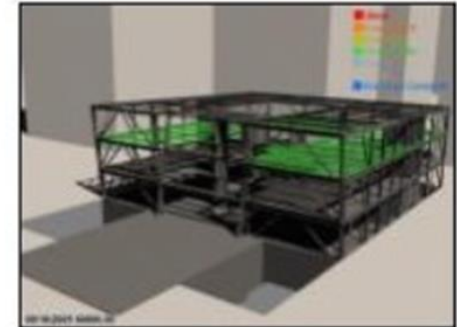
3D Model
(Product)



Schedule
(Process)

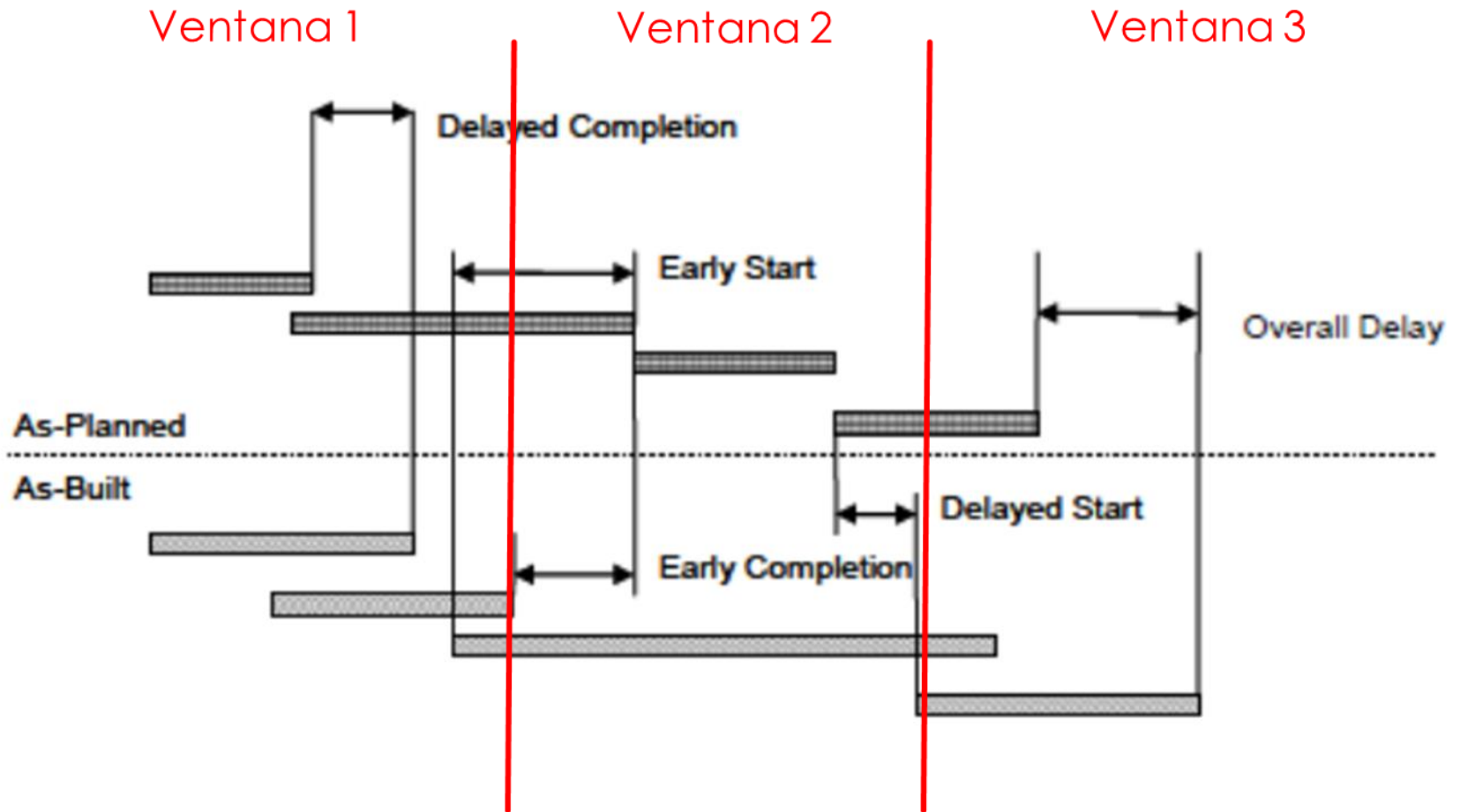


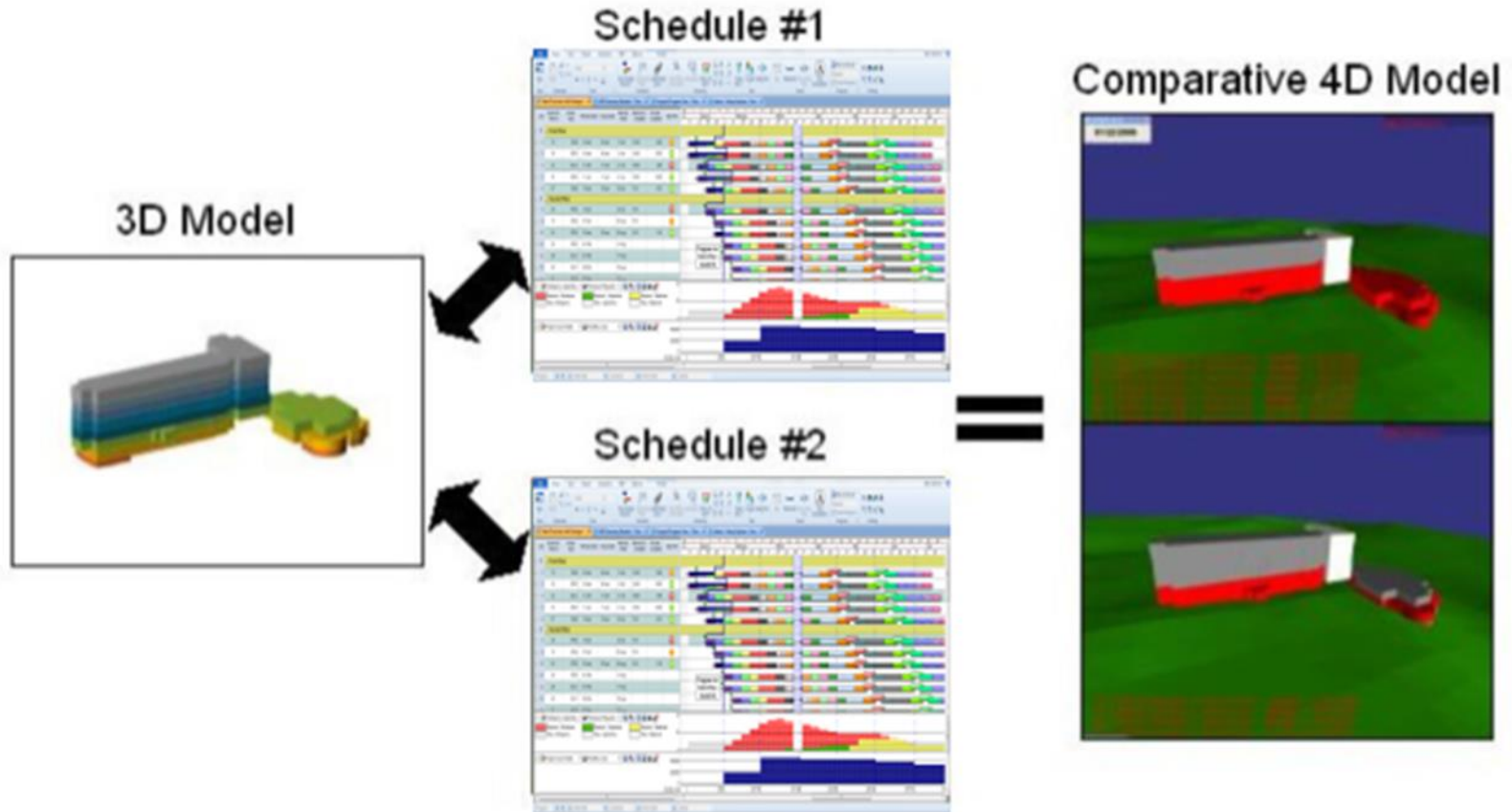
4D Model

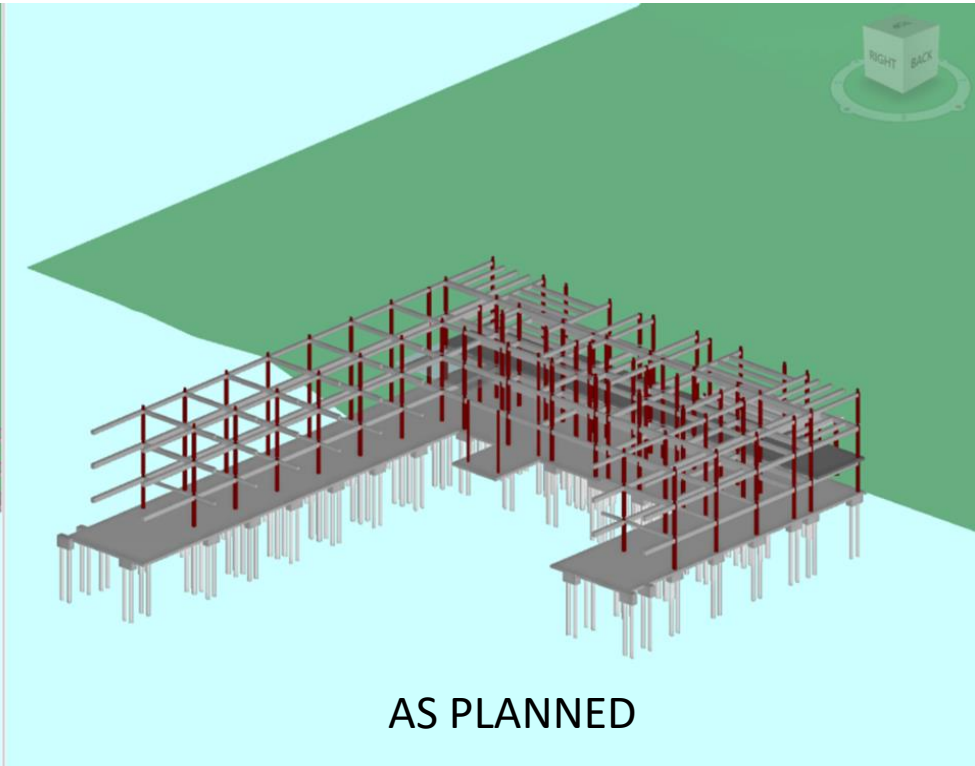
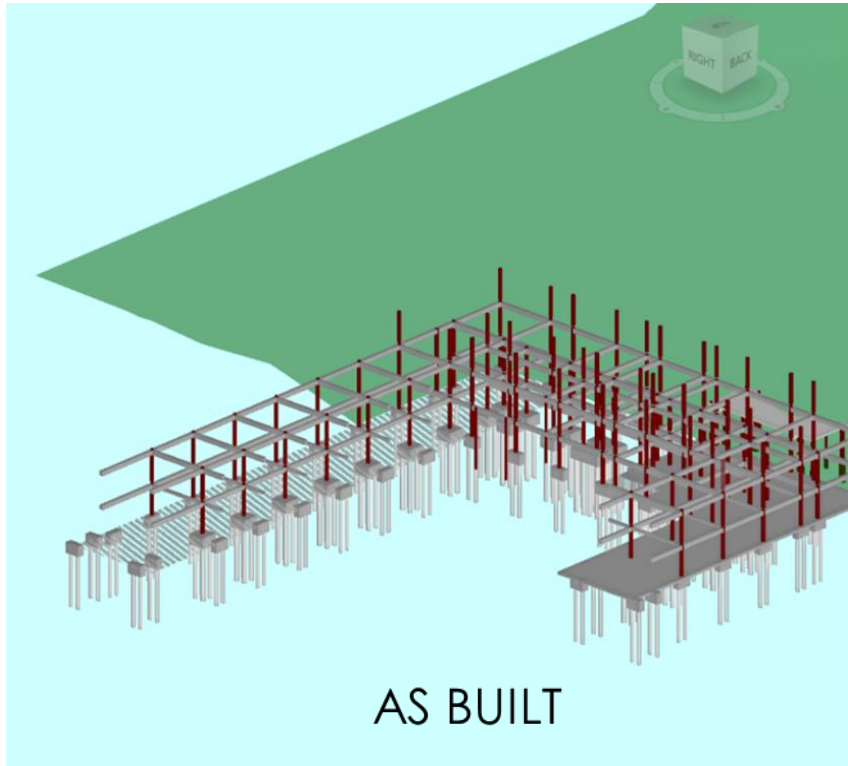


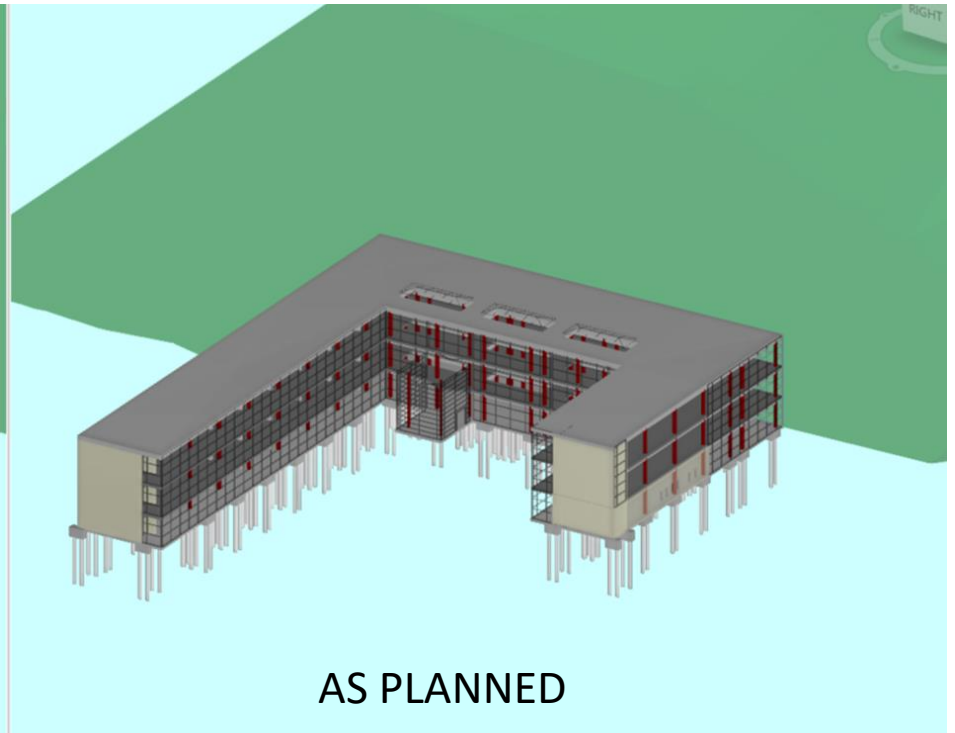
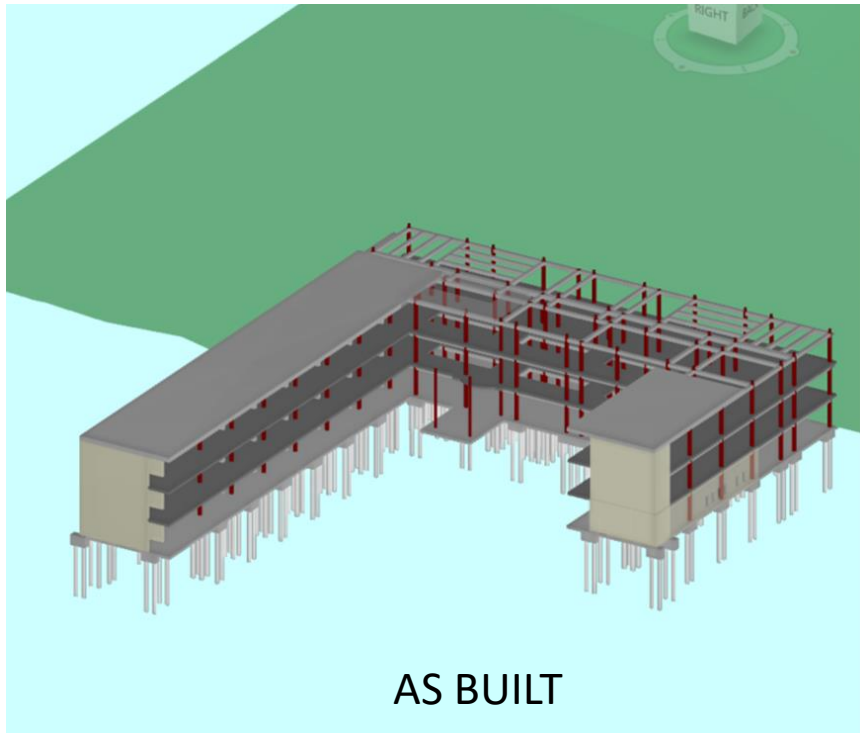
- As Planned v As Built – APAB
 - Time Impact Analysis – TIA
 - Collapsed As Built – CAB
 - Impacted As Planned - IAP
-

As Planned versus As Built









- Recopilación de datos
 - La presentación
-